

# Det mørke nettet

KiNS konferansen 2021



1

## New Record: Darknet Markets Are Booming



By Drew Todd

[Read more about the author](#)

TUE | FEB 9, 2021 | 8:38 AM PST

As most of us know, 2020 was a year of polar opposites in the business world. Some businesses went bust while others boomed and set new records.

One profitable line of work during the pandemic? Selling illicit goods and services on the Dark Web.

These darknet markets hauled in a record amount of revenue last year, with customers around the globe spending \$1.7 billion in cryptocurrency.

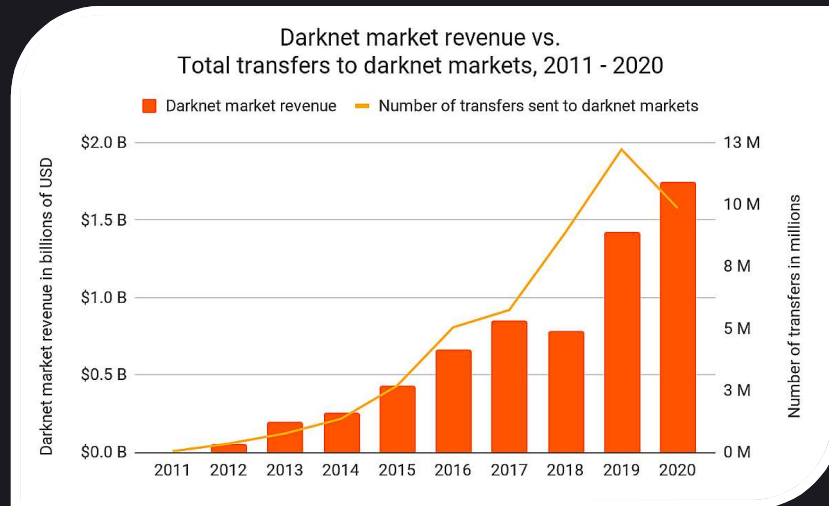
Chainalysis, which tracks this kind of spending, shared new research breaking down darknet markets and their geographic distinctions in 2020.

### Dark Web markets: record spending in 2020

The chart below reveals darknet market revenue and the number of transfers to those markets. The gold line shows that the actual number of individual transfers dropped in 2020, but the orange bars show that 2020 was the first year for darknet market revenue to top \$1.5 billion.

Kilde: secureworld.io

2



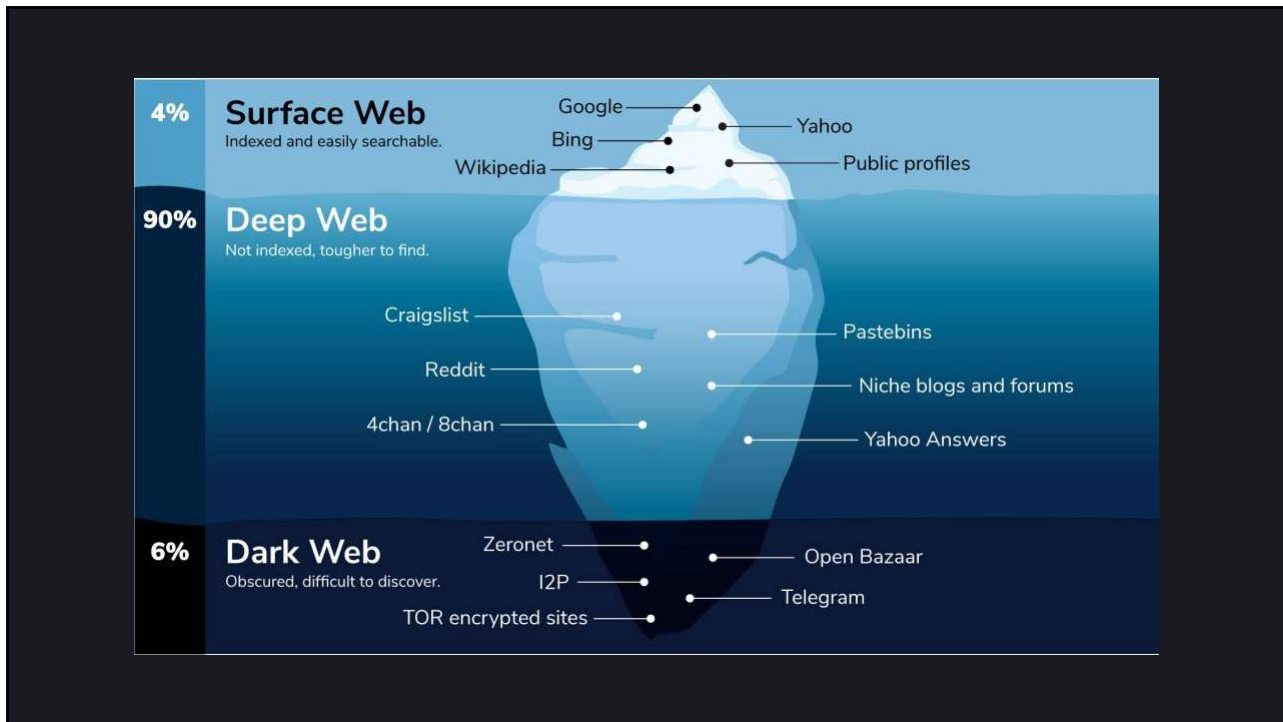
Kilde: secureworld.io

3

Om det mørke nettet



4



5

## Hovedgrunner for å bruke det mørke nettet



Kilde: [www.raconteur.net/infographics/the-dark-web/](http://www.raconteur.net/infographics/the-dark-web/)

6

# Anonymitet

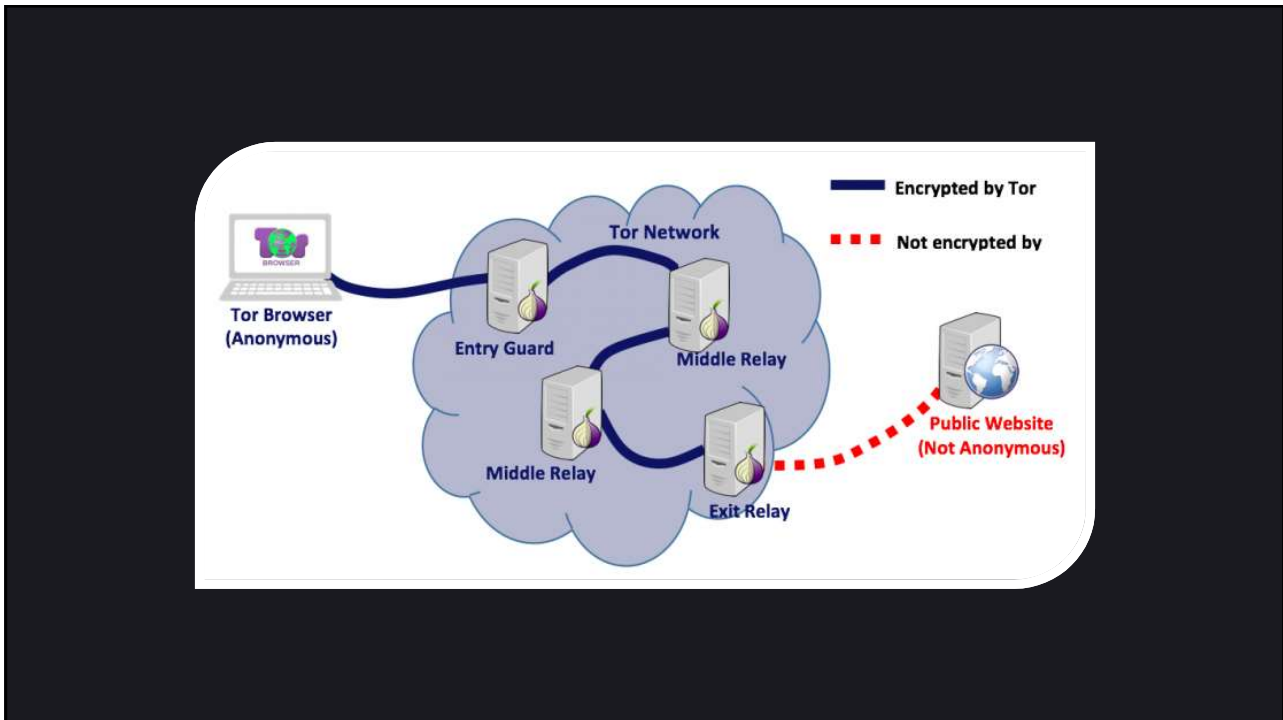
### Anonym tilgang til tjenester på Surface Web

- Tor sikrer anonym tilgang gjennom Tor nettverket
- Tor sine «exit nodes» kobler seg til surface web tjenester

### Anonym tilgang til tjenester på det mørke nettet

- Tor nettverket gir komplett ende-til-ende anonymitet
- Skjuler identiteten til både klienten og serveren

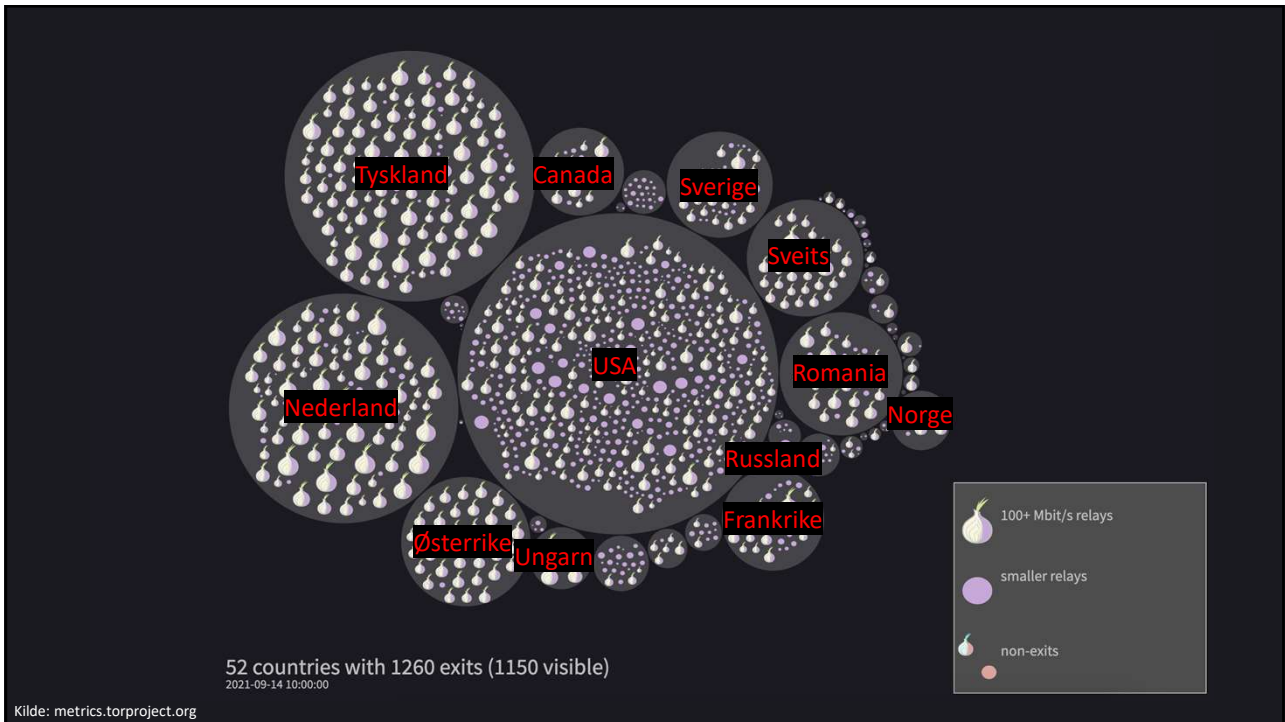
7



8



9



10

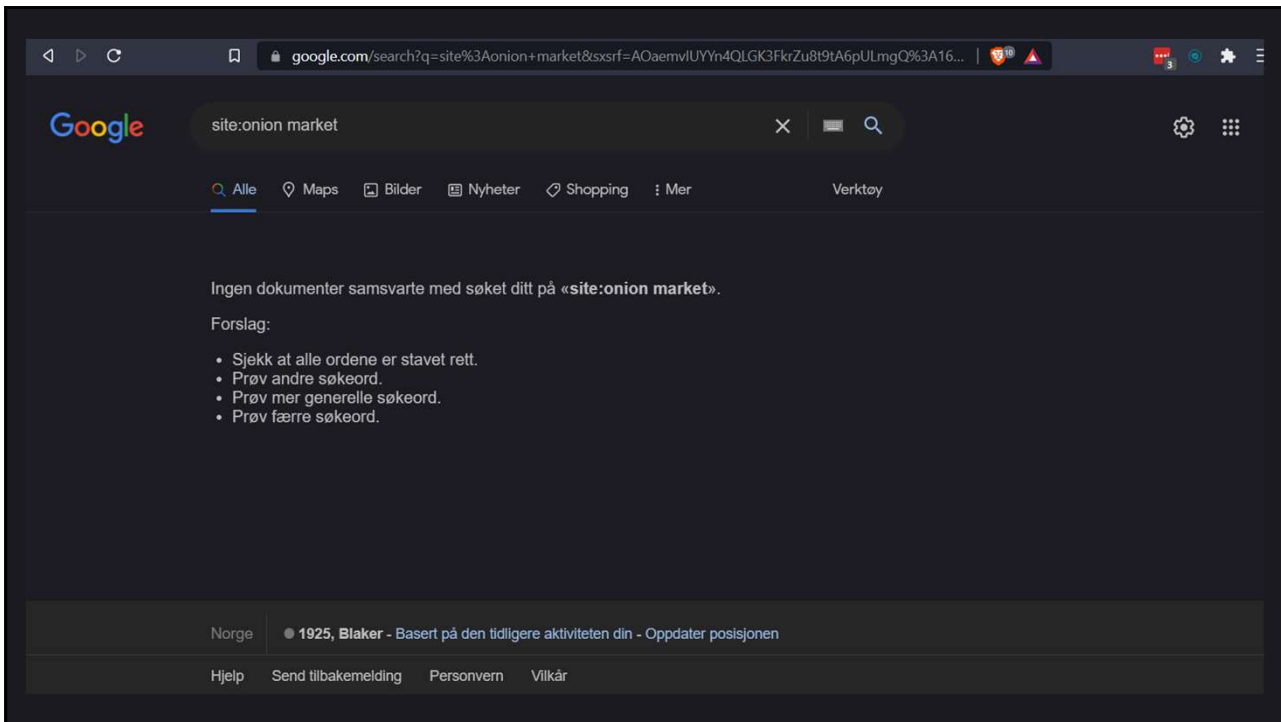
<http://underdiriled6lvdfgiw4e5urfofuslnz7ewictzf76h4qb73fxbsxad.onion/>

11

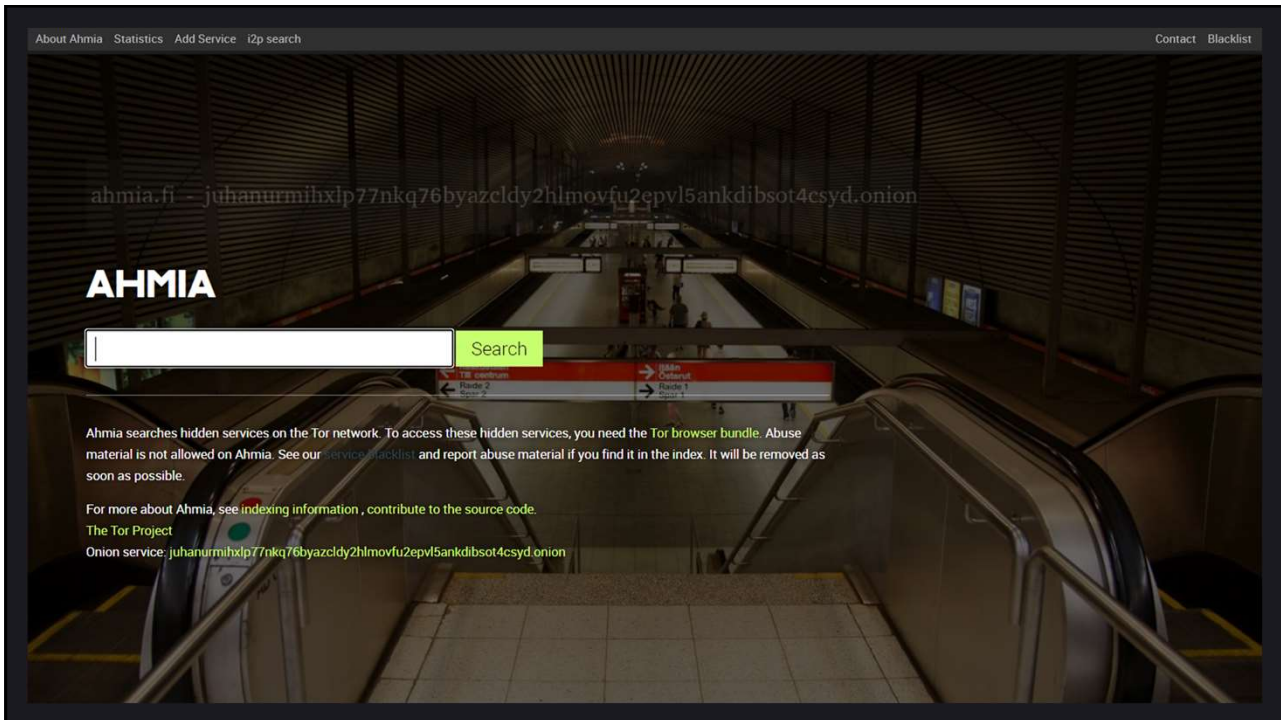
# Hvordan finne frem?

Søkemotorer og oversiktssider

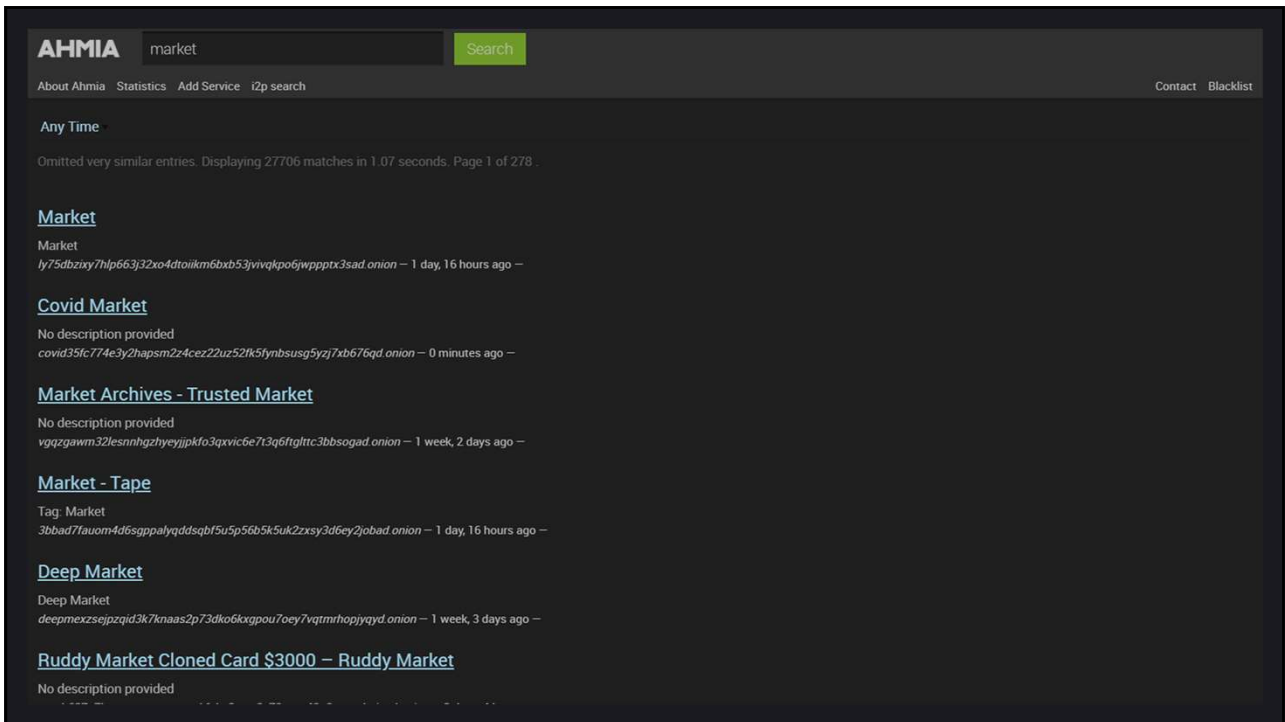
12



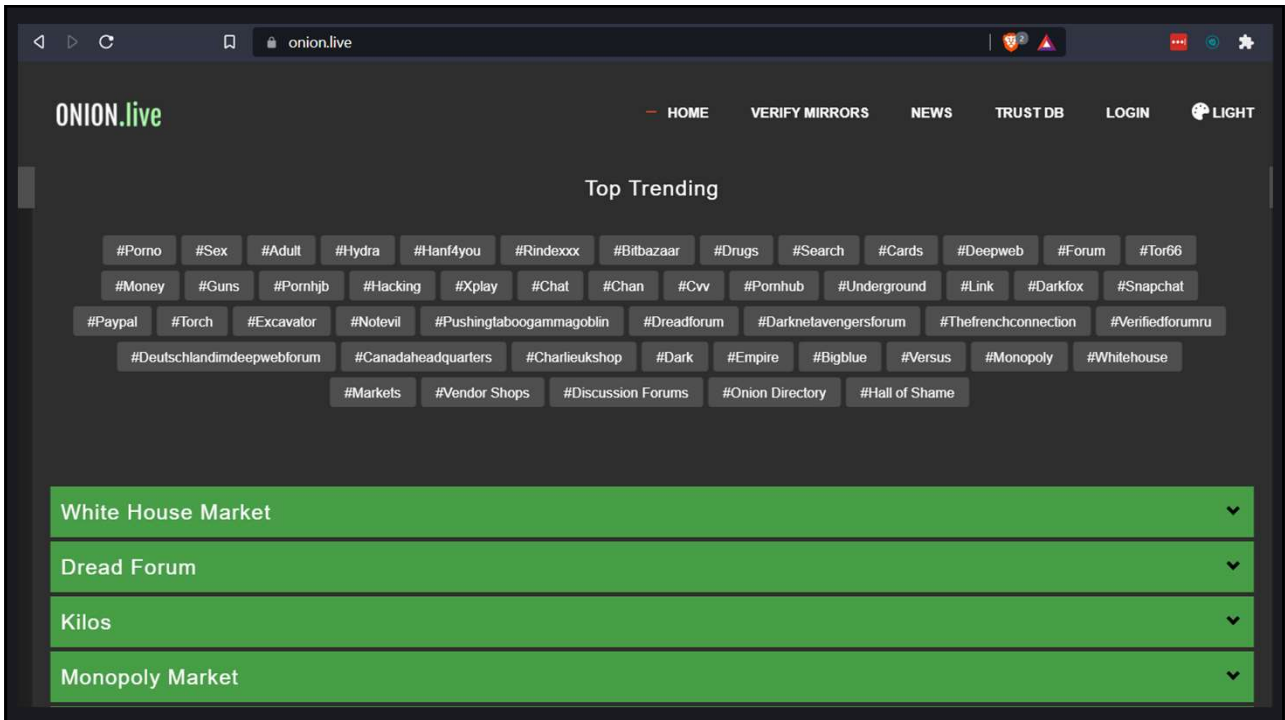
13



14



15



16



dark.fail

Open in Tor

## dark.fail: Is a darknet site online?

Updated Mon, 13 Sep 2021 07:01:47 UTC  
Mastodon | Twitter

**You are on the clearnet.** It is not recommended to view our site here. Domain names are not as secure as Tor hidden services. Install Tor Browser and visit us at our .onion instead:

`darkfailenbsd1a5ma12mxn2uz66od5vtzd5qozslagrffzachha3f3id.onion` [Verify](#)

**NEW:** Verify signatures with Dark.fail's new PGP Tool. Don't get phished. Always PGP verify .onion and Bitcoin addresses before interacting with them.

Tor is the uncensored internet. Install [Tor Browser](#) to explore it. Set `darkfailenbsd1a5ma12mxn2uz66od5vtzd5qozslagrffzachha3f3id.onion` as your home page to save time. Links are PGP verified and unclickable for your safety. [dark.fail's philosophy](#) and [finances](#)

**This resource is intended for researchers only.** We do not vouch for any sites.

**Darknet Live**

- <http://darkzxx4avcsuofgfez5zq75cqc4mprjvfqywo45dfcaxrwqg6qr1fid.onion>

**Dread**

- <http://dreadytofatroptsdj6io7l3xptbet6onocno2yv7jicoxknyazubrad.onion>

**Recon**

- <http://recon222tttn4ob7ujdhbn3s4gjre7netvzybuvbq2bcqlwtkiqinhad.onion>

17

Log In

HOME ONION LINKS ARRESTED NEWS SCAMMERS MARKET REVIEWS

News | Subread

**ResTor**

Updated Sun, 30 May 2021  
Twitter

#ROYAL MARKET #WHITE HOUSE MARKET #CASTLE MARKET #TORREZ MARKET #DARK0DE MARKET

There are only 2 reasons why Darknet market link directory Exists: **Only 3 points:**

- 1) This site only provides official links. Game over to phishing. [Read the announcement here.](#)
- 2) Say NO to 'onion censorship' and choose for yourself. [Read about it here.](#)
- 3) We are Best .Onion directory Darknet Market & Darknet Vendor Shop Links Directory

**Check:** What markets REALLY exist on the darknet? [Check the full tour of current LEGIT marketplaces.](#)

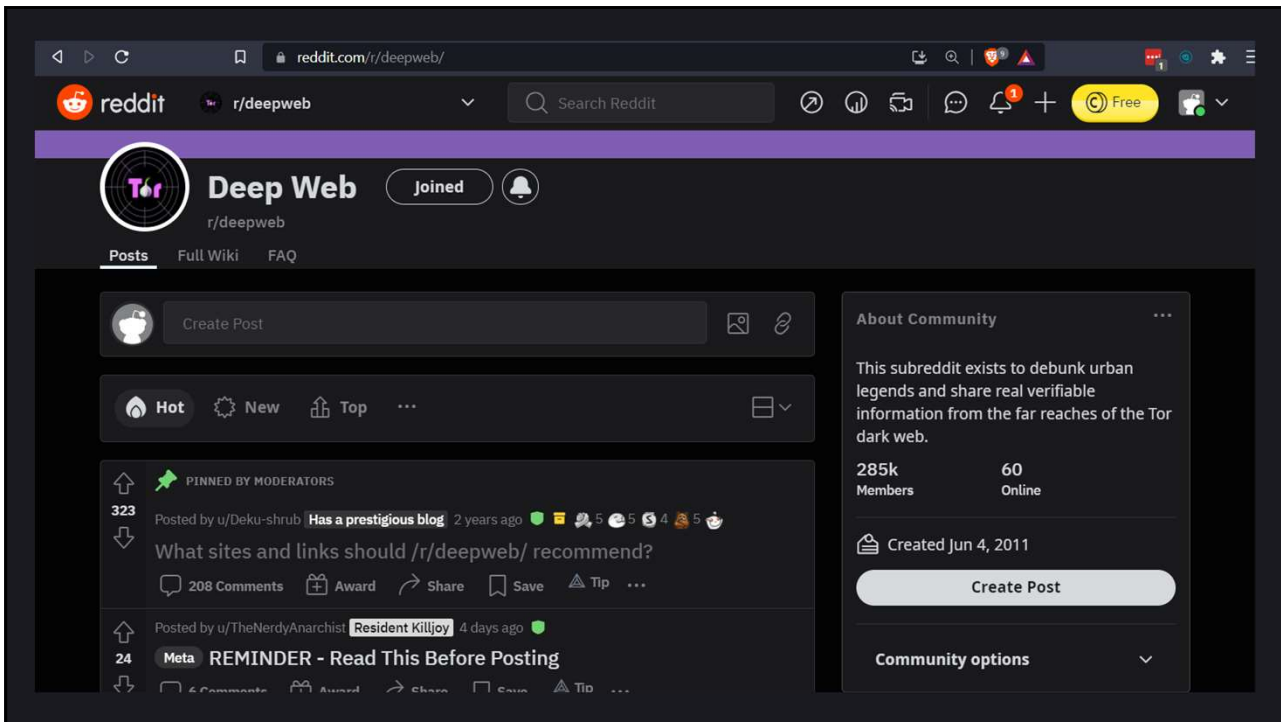
**You are on the clearnet.** It is not recommended to view our site here. Domain names are not as secure as Tor hidden services. Install **Tor Browser** and visit us at `restorsjrn34sdds.onion` instead.

**REF: DARK.FAIL** - Verify signatures with Dark.fail's New PGP Tool. Don't get phished. Always PGP verify .onion and Bitcoin addresses before interacting with them.

Tor is the uncensored internet. Install **Tor Browser** to explore it. Set `restorsjrn34sdds.onion` OR `darkfail11nkf4vf.onion` as your home page to save time. Links are PGP verified and Clickable. [dark.fail's philosophy](#) and [finances](#)

**This resource is intended for research** English

18



19



20

# Tjenester på det mørke nettet

Illegale markedsplasser

21

# Tjenester på det mørke nettet

Hackers for hire

22

# Tjenester på det mørke nettet

Murders for hire

23

Hva kan/bør kommunen gjøre?

24

# Hva kan kommunen gjøre?

- Tor trafikk kan overvåkes/blokkeres:
  - Utgående trafikk til Tor entry noder
  - Innkommende trafikk fra Tor exit noder
- Mulig å abonnere på tjenester som overvåker opplysninger på det mørke nettet.

25

The screenshot shows a web browser displaying an article from thefirreport.com. The article is titled "MITRE ATT&CK Initial Access" and discusses a ransomware attack. A red box highlights the following text: "Initial access for this actor was via exposed RDP services. Originally, the actor connected from 198.96.155.3, and then performed a kind of hand off over the course of the campaign, first to 23.129.64.190 and then finally 185.220.100.240. All 3 of these IP's belong to the Tor network and function as exit nodes." Below this, the article mentions "Execution" and "The threat actors started off by using RDP but also relied on 2 different OSTs during this intrusion." The right side of the page features a sidebar with a "Ryuk" ransomware advertisement, including a "READ MORE" link and a "NetWalker Ransomware in 1 Hour" section.

26

```
1900 lines (1900 sloc) 43.5 KB
Raw Blame
1 101.100.146.147
2 101.99.90.171
3 102.130.113.37
4 102.130.113.9
5 103.228.53.155
6 103.234.220.195
7 103.236.201.88
8 103.253.41.98
9 103.28.52.93
10 104.131.206.23
11 104.149.150.10
12 104.200.20.46
13 104.244.72.115
14 104.244.72.120
15 104.244.72.123
16 104.244.72.132
17 104.244.72.152
18 104.244.72.168
19 104.244.72.180
20 104.244.72.239
21 104.244.72.248
22 104.244.72.36
23 104.244.72.65
24 104.244.72.7
25 104.244.72.91
26 104.244.73.126
27 104.244.73.13
```

27



28